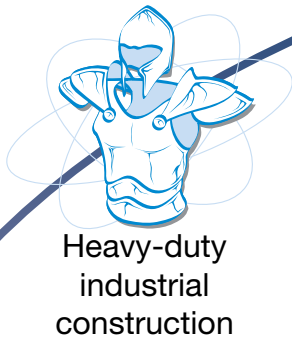


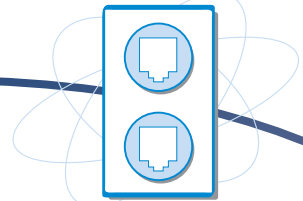


LM4XXe

Mid-range Industrial Printer for Logistics and Manufacturing Industries



Printing resolution
of 203/305 dpi



Easy connectivity



Strong and durable
sturdy metal chassis



Easy loading
of fanfold media



Interface port for various
connectivity options



Shipping and Logistics
labels

LM408e, LM412e

General Specifications



PRINTING SPECIFICATION		LM408e	LM412e
Printing Method		Direct Thermal, Thermal Transfer	
Print Resolution, dots/mm (dpi)		8 dots/mm (203dpi)	12 dots/mm (305dpi)
Max. Print Area	Width, mm (inch)	104 mm (4,1")	
	Length, mm (inch)	178 mm (7")	
Print Speed, mm/sec (ips)*		From 51 mm/sec (2ips) to 153 mm/sec (6ips)	
CONSUMABLES SPECIFICATION (Recommended to use printer supplies manufactured or certified by SATO)			
Media Type		Roll paper and fanfold	
Media Size (with backing paper size)	Width, mm	Label: 22 ~ 128 mm (Label with backing paper: 25 ~ 131 mm)	
	Length, mm	Label: 6 ~ 178 mm (Label with backing paper: 9 ~ 181 mm)	
	Thickness, mm	0.08 ~ 0.26 mm	
	Max. external diameter, mm	218.44 mm	
	Inner diameter, mm	76.2 mm	
	Wind orientation	Face-in	
Fan-Fold	Max. folding height	100 mm	
Ribbon	Wind orientation	Face-in	
	Maximum width, mm	111 mm	
	Maximum length, m	450 m	
FONT / SYMBOLOGIES			
Font		XU 5x9, XS 17x17, XM 24x24, XB 48x48, XL 48x48	
		OCR-A 15x22, OCR-B 20x24	OCR-A 22x33, OCR-B 30x36
Font option		Kanji 16x16 (JIS 1st & 2nd standard) (selectable between square Gothic/Mincho) Kanji 24x24 (JIS 1st & 2nd standard) (selectable between square Gothic/Mincho)	
Barcode symbologies	1-Dimension	UPC-A/E, EAN8/13, JAN8/13, CODE39, CODE93, CODE128, UCC/EAN128, Interleaved 2 of 5, Industrial 2 of 5, Matrix 2 of 5, NW-7, MSI, BookLand, POSTNET	
	2-Dimension	PDF417 (ver 2.4), QR Code (ver 8.1), Maxi Code (ver 3.0) and Data Matrix (ver 2.0)	
INTERFACE CHARACTERISTICS			
Interface		IEEE 1284 Board, High Speed RS232C Board, USB Board, LAN Board, Wireless LAN Board	
OPERATING CHARACTERISTICS			
Power Requirements		AC 100-120/200-240V (Jumper)	
Environment	Operating	5 ~ 40°C / 30 ~ 80% RH (w/out condensation)	
	Storage	-5 ~ 60°C / 30 ~ 90% RH (w/out condensation)	
Dimension (W x D x H), weight		W271 x D430 x H321 mm / Approx. 13Kg	
OTHERS			
Function	Useful Features	Status report, graphic, sequential numbering, form overlay, custom designed character, font decoration, reverse image, line print, hex dump print, format store, outline, outline variation, label skip, zero slash switchover	
	Self Diagnosis Checking	Head check, paper end, ribbon end, ribbon near end**, head open, test print	

* Measurements are approximate values

** Ribbon near-end can be detected with 30~15m of ribbon remaining

Recommended applications



Manufacturing, Work-In-Process and Materials Tracking

Picking labels, work-in-process labels, inventory control labels, ad-hoc production order labels



Shipping and Inventory Management

Shipping labels, container/pallet labels, carton labels, piece labels, packaging labels, routing labels, tracking labels, hub sortation labels, physical distribution labels



Compliance Labelling

Cargo freight labels