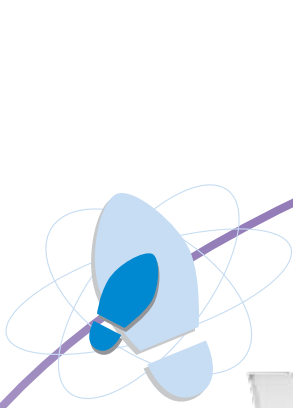


MB400

Portable printer



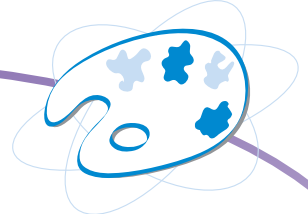
Small footprint



Light weight



Compatible with PDA



2-colours printing



Carry belt supplied



Wireless connectivity



Easy operation: printer control via only two buttons



Support for Red and Black printing

MB400

General Specifications



PRINTING SPECIFICATION

Printing Method	Direct Thermal	
Print Resolution, dots/mm (dpi)	8 dots/mm (203dpi)	
Max. Print Area	Width, mm (inch)	104 mm (4.09")
	Pitch, mm (inch)	297 mm (11.69")
Print Speed, mm/sec (ips)*	Max. up to 50 mm/sec	

CONSUMABLES SPECIFICATION (Recommended to use printer supplies manufactured or certified by SATO)

Sensor Type	Reflective sensor for use with pre-printed marks. See through sensor for die-cut label with gap. Dispenser sensor.	
Media Type	Roll die-cut label with gap or pre-printed label, 2 colour direct thermal, Linerless media	
Media Size (with backing paper size)	Width, mm	Label: 50 ~ 111 mm
	Length, mm	Label: 25 ~ 297 mm
	Thickness, mm	0.06 ~ 0.18 mm
Media Roll Size	Max. External Diameter, mm*	Ø 58 mm
	Inner Diameter, mm*	Ø 26.5 mm

FONT / SYMBOLOGIES

Font	Internal	XS, XM, XB, POP, Kanji and Gothic-pointed character
	Downloadable	TrueType Font, Customer bitmap font
Barcode symbologies	1-Dimension	EAN 8/13, UPC - A/E, NW -7, Inter-leaved 2 of 5, CODE 39, CODE 93, CODE 128
	2-Dimension	PDF417 (ver 2.4), QR Code (ver 8.1) *Data Code and Maxi Code by downloading the special firmware

INTERFACE CHARACTERISTICS

Processor	32-bit RISC
Interface choices	RS232C, IrDA [Ver.1.2; Protocols: Standard, BHT, IrCOMM, IrOBEX (option)], Bluetooth ver1.1, IEEE802.11b Wireless LAN.

OPERATING CHARACTERISTICS

Power Requirements	14.8 V (1600mAh)	
Environment	Operating	5 ~ 50°C / 25 ~ 80% RH (w/out condensation)
	Storage	-10 ~ 60°C / 25 ~ 80% RH (w/out condensation)
Regulatory approvals	UL, CSA, CE, TÜV	
Dimension (W x D x H), weight	W190 x D80 x H139 mm / 960g with battery installed	

ACCESSORIES

Battery Charger, AC Adapter, Linerless kit, Shoulder belt

OTHERS

Function	Useful Features	Auto power saving, printer goes to sleep mode when idle for 5 seconds and automatic power off when idle for another programmable time interval.
	Self Diagnosis Checking	Head Check, Battery Balance Check, Paper End, Head Open, Test Print.

Recommended applications



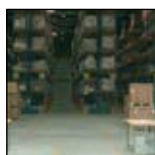
Healthcare

Patient Tracking & Identification, Drugs Issuing, Front-Desk Registration/Admission, Wristbands, Drugs Labelling, Stock Taking are made easy by using our fool-proof barcode labelling & traceability system. Our printers are also made of anti-microbial material to prevent the spread of infection.



Retail

Price Markdown Solutions, Promotional Labelling, Shelf Labelling, Price Labelling/Tagging, Queue Busting Solutions, Stock Taking, etc. are all within SATO's area of expertise.



Warehouse / Logistics

Where large numbers of cartons and items are concerned, some kind of tracking & tracing system needs to be in place. The SATO system takes charge from goods arrival to storage to picking/packing to delivery without missing a beat.



Receipt Printing

Transport and Courier delivery receipt printing, Van Sales and Mobile POS receipt printing for On-Demand on-site printing. Reduces fatigue with the small & light weight. With a large media capacity and a long battery life (up to 8-hours shift).