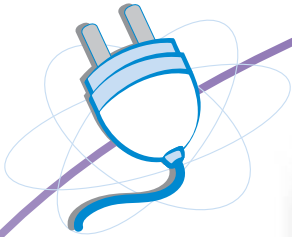




# CT400 / CT410

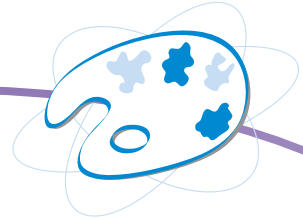
Plug and Play Barcode Printer  
Large Impact in a Compact Design



Plug & Play



Antimicrobial casing



2-colour printing



Small, compact, high throughput design



Easy label loading and printer maintenance



Informative LEDs indicate machine status for speedier operation and maintenance



Linerless-printing kit minimizes the need to regularly maintain the platen

# CT400, CT410

## General Specifications



PRINTING SPECIFICATION		CT400	CT410
Printing Method		Thermal Transfer, Direct Thermal	
Print Resolution, dots/mm (dpi)		8 dots/mm (203dpi)	12 dots/mm (305dpi)
Max. Print Area	Width, mm (inch)	104 mm (4.1")	
	Pitch, mm (inch)	400 mm (15.6")	
Print Speed, mm/sec (ips)*		152 mm/sec (6ips)	102 mm/sec (4ips)
<b>CONSUMABLES SPECIFICATION (Recommended to use printer supplies manufactured or certified by SATO)</b>			
Sensor Type		Fixed see through sensor for die-cut labels Reflective sensor for use with preprinted eye-mark	
Media Type		Roll or fan-fold paper	
Media Size	Width, mm	23 - 118 mm	
	Length, mm	15 ~ 397 mm	
	Thickness, mm	0.08 ~ 0.19 mm	
Media Roll Size	Max. External Diameter, mm*	Ø 110 mm	
	Inner Diameter, mm*	Ø 40 mm	
<b>FONT / SYMBOLOGIES</b>			
Font	Internal	12 proportional & mono-spaced bitmap fonts; outline fonts; CGTimes, CGTriumvirate	
	Downloadable	TrueType font	
Barcode symbologies	1-Dimension	UPC-A/E, EAN-8/13, CODE39, 93 & 128, Interleave 2 of 5, Matrix 2 of 5, Codabar, MSI, Bookland, POSTNET, UCC/EAN 128, RSS-14	
	2-Dimension	PDF417 (ver 2.4), Maxi Code (ver 3.0) and Data Matrix code (ECC 200) ver 2.0	
<b>INTERFACE CHARACTERISTICS</b>			
Interface (all optional)		Parallel: IEEE 1284, Serial RS-232C, USB I/F, LAN:10/100 BaseT, WLAN 802.11b	
<b>OPERATING CHARACTERISTICS</b>			
Power Requirements		AC115 ±10%, AC230 ±10% (115/230 V auto-switching)	
Environment	Operating	5 ~ 35°C / 30 ~ 80% RH (w/out condensation)	
	Storage	-5 ~ 45°C / 20 ~ 80% RH (w/out condensation)	
Regulatory approvals		UL, CSA, CE, TÜV	
Dimension (W x D x H), weight		W198 x D230 x H181 mm / 3kg	
<b>OPTIONAL ACCESSORIES</b>			
Label cutter, label dispenser, linerless media kit			

\* Measurements are approximate values

## Recommended applications



### Healthcare

Patient Identification, Drugs issuing, Wristbands, Drugs Labelling, Stock Taking, Blood Bag Labelling, Shelf & Pharmacy Labelling are made easy by using our fool-proof barcode labelling & traceability system. Our printers are also made of anti-microbial material to prevent the spread of infection.



### Registration / Tracking

Patient Registration and Front-Desk Registration/Admission, Appointment Booking, File / Record Tracking, Patient Tracking, Laboratory Specimen Tracking are made easy by using our fool-proof barcode labelling & traceability system. Our printers are also made of anti-microbial material to prevent the spread of infection.



### Hospitality

Tourism, Theme Parks, Entertainment, Service Industry are all within our specialties. From ticketing to customer tracking to registering sales for the day, all reports & records are just but a click away.